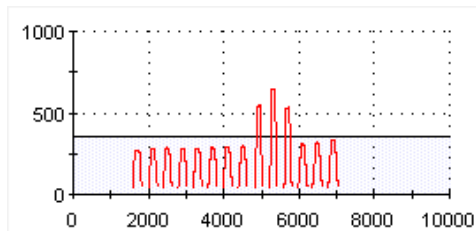
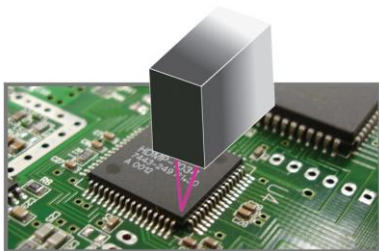


# TECHNOLOGICALLY ADVANCED

## MV-7 Series

# MIRTEC

- Five Camera In-Line AOI System
- Exclusive **TEN MEGA PIXEL ISIS** Vision System
- Precision **TELECENTRIC COMPOUND LENS** Design
- 9.8 Micron / Pixel Resolution
- Extremely Simple Programming and Operation
- Superior Defect Detection / Lowest False Call Rate!
- "World Class" Global Customer Support



- Integrated **INTELL-SCAN** Laser Inspection System
- Superior Lifted Lead Detection For Gull Wing Devices
- Four Point Height Measurement For Co-Planarity Testing Of BGA and CSP Devices
- Enhanced 3D Solder Paste Measurement Capability



3 Morse Road - Oxford, CT 06478 - Phone: 203-881-5559 - Fax: 203-881-3322

[www.mirtecusa.com](http://www.mirtecusa.com)

## MV-7 Series Features and Specifications

### Standard Features:

- Intel® Core™2 Duo PC, 24" Flat Screen LCD Monitor, Windows 7™ OS, HDD, Mouse & Keyboard, Network LAN Card.
- Three (3) Stage High Speed Conveyor System with Programmable Width Control and Automatic PCB Support.
- Three (3) Layer Programmable LED Light Source (Horizontal, Vertical, Coaxial).
- Pre and Post Reflow Inspection Capability.
- Automatic Teaching Software w/ Comprehensive Package Type Library for Simple "Drag and Drop" Programming.
- Local Software: Repair Plus Software, Statistical Process Control (SPC) Software.

### Options:

- Five or Ten Mega Pixel Top-Down View Digital Color Camera System (See Specifications).
- Side View Camera System - Quantity (4) Five or Ten Mega Pixel Side View Digital Color Cameras (See Specifications).
- Intelli-Scan Laser System - Superior Lifted Lead Detection for Gull Wing Devices; Z-Height Measurement for BGA's Devices.
- Intelli-Beam Laser System - Z-Height Measurement Capability for BGA and CSP Devices.
- NG Marking System - Clearly Marks Position of Defects with a Water Soluble Ink Dot.
- 2D Bar Code Reader - Gun Type - 2D Bar Code Reading Capability Using Handheld Gun Type Reader.
- 2D Bar Code Reader - Camera Type - 2D Bar Code Reading Capability Using the Top Down Camera System.
- Remote Software (PC Required): Off Line Programming, Remote Repair Plus, Remote SPC, Remote Management.

### System Specifications:

Top-Down View Camera Options	Field Of View	Resolution
5M Pixel (2,456 x 2,058) Camera Option 1	44.7mm x 37.4mm (1.76" x 1.48")	5 Mega Pixels @ 18.2 um/pixel
5M Pixel (2,456 x 2,058) Camera Option 2	32.9mm x 27.5mm (1.30" x 1.08")	5 Mega Pixels @ 13.4 um/pixel
5M Pixel (2,456 x 2,058) Camera Option 3	24.0mm x 20.1mm (0.94" x 0.79")	5 Mega Pixels @ 9.80 um/pixel
10MP ISIS (3,664 x 2,736) Camera Option 1	66.6mm x 49.7mm (2.62" x 1.56")	10 Mega Pixels @ 18.2 um/pixel
10MP ISIS (3,664 x 2,736) Camera Option 2	49.0mm x 36.6mm (1.93" x 1.44")	10 Mega Pixels @ 13.4 um/pixel
10MP ISIS (3,664 x 2,736) Camera Option 3	35.9mm x 26.8mm (1.41" x 1.05")	10 Mega Pixels @ 9.8 um/pixel

<b>Side View Camera System</b>	5 MEG: Quantity (4) Five Mega Pixel (2,576 x 1,968) Digital Color Cameras 10 MEG: Quantity (4) Ten Mega Pixel (3,664 x 2,736) Digital Color Cameras
<b>Intelli-Scan Laser Specifications</b>	Z-Height Measurement Accuracy: +/- 10 um Resolution: 1 um / point Inspection Speed: 0.5 sec / point
<b>Intelli-Beam Laser Specifications</b>	Z-Height Measurement Accuracy: +/- 20 um Resolution: 15 um / point Inspection Speed: 0.5 sec / point
<b>Top-Down Camera Lens</b>	Precision Telecentric Compound Lens Design
<b>Top Side Clearance</b>	Standard - 45mm (1.77"); Optional - 25mm (0.98")
<b>Bottom Side Clearance</b>	50.8mm (2.0") From Bottom of PCB Surface
<b>Minimum Component Inspection</b>	01005 Chip Component.
<b>Robot Positioning System</b>	Closed Loop AC Servo Drive System
<b>Resolution</b>	6 um (.000236 in.)
<b>Repeatability</b>	±15 um (± 0.000591 in.)
<b>Maximum Inspection Speed</b>	0.37sec / frame - 8,946 mm <sup>2</sup> / sec (11.046 in <sup>2</sup> / sec)
<b>Power Requirements</b>	Single Phase 208 VAC ± 10%; 50/60 Hertz; 5 Amps
<b>Air Requirements</b>	0.5Kqf / cm <sup>2</sup> (7 PSI)

Model Number	PCB Size Range
MV-7xi	50mm x 50mm to 510mm x 460mm (2.0"x2.0" to 20.1" x 18.1")
MV-7U	50mm x 50mm to 660mm x 610mm (2.0"x2.0" to 26.0" x 24.1")

Model Number	Machine Dimensions
MV-7xi	1,100mm W x 1,530mm D x 1,500mm H (43.3" x 60.2" x 59.1")
MV-7xi w/ 350mm Side Rails and Light Tower	1,800mm W x 1,530mm D x 1,985mm H (70.9" x 60.2" x 78.2")
MV-7U	1,270mm W x 1,680mm D x 1,500mm H (50.0" x 66.2" x 59.1")
MV-7U w/ 500mm Side Rails and Light Tower	2,270mm W x 1,680mm D x 1,985mm H (89.4" x 66.2" x 78.2")

Model Number	Weight
MV-7xi	1,000 kg (2,204 lbs)
MV-7U	1,050 kg (2,314 lbs)